

# TQJ-2527A6

## Fiberglass Omni Antenna

### Technical Sheet

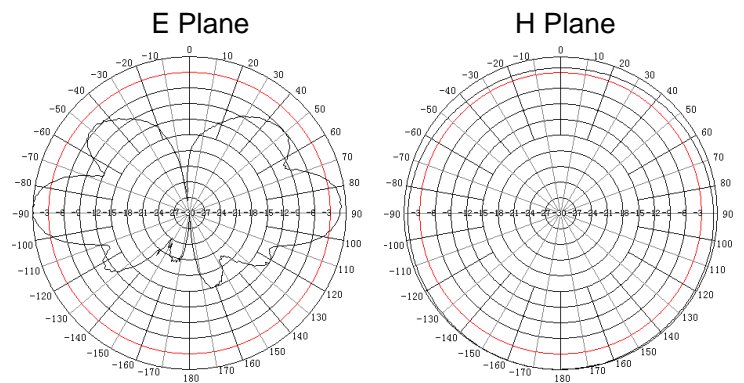


#### Applications

- 2.5-2.7GHz Band
- WLAN System
- WiFi
- Point to multipoint

#### Features

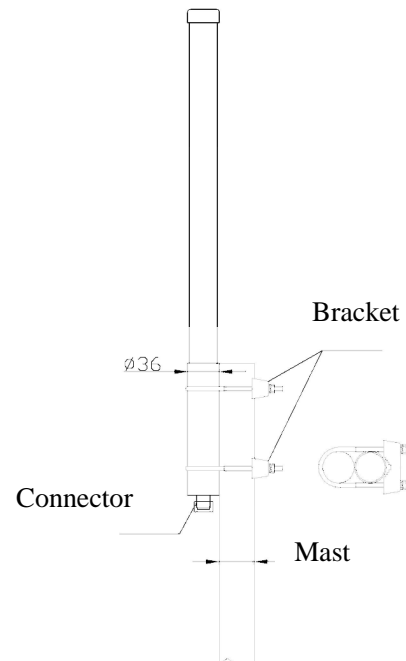
- Low VSWR
- High quality fiberglass radome
- Supplied with mounting kits
- Mast mounting
- Integral N-Female Connector



#### Specifications

Model	TQJ-2527A6
Freq.Range-MHz	2500 to 2700
Bandwidth-MHz	200
Gain-dBi	6
Ver.Beamwidth-°	28
VSWR	≤1.5
Impedance-Ω	50
Polarization	Vertical
Max.Power-W	100
Connector	N Female
Length-mm	552
Mounting way	Mast
Mast Diameter-mm	φ 35 to φ 50
Weight-g	470
Rated Wind Velocity-m/s	60

#### Installation Sketch



Kenbotong Communication LTD

Addr : Kenbotong Technology Park, No2. Chanxiu Road, Foshan, Guangdong, China 528061

Tel: +86-757-82219788, 82126632 Fax: +86-757-82212072

Email: kbt@kenbotong.com web: <http://www.kenbotong.com>