

TQJ-2458D6

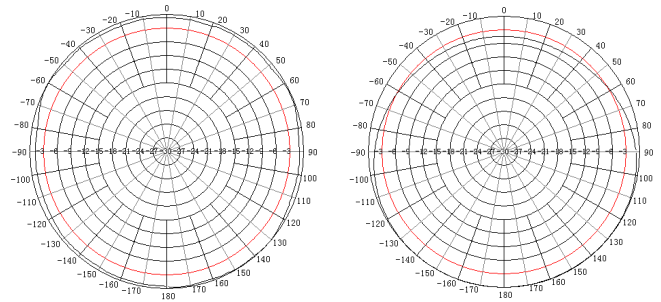
Dual Band Fiberglass Omni Antenna Technical Sheet



Applications

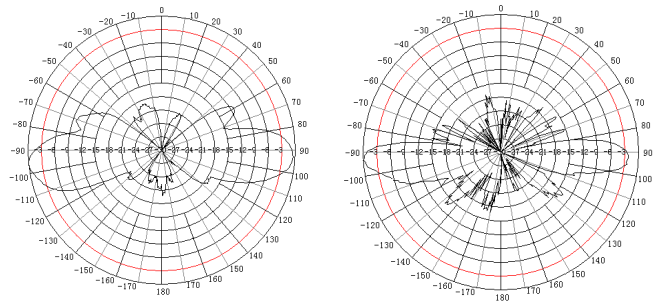
- 2.4GHz/5GHz WiFi system
- IEEE802.11a/b/g
- Point to multipoint application

Typical Patterns



2.4GHz H Plane

5GHz H Plane



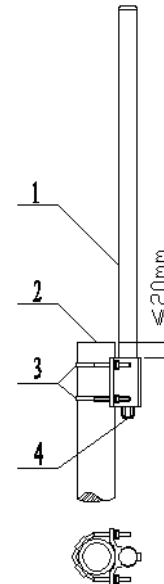
2.4GHz E Plane

5GHz E Plane

Specifications

Model	TQJ-2458D6		
Freq.Range-MHz	2400-2483	5150-5350	5350-5850
Gain-dBi	6	6	8
Ver.Beamwidth-°	E: 22	E: 22	E:10
VSWR	≤2		
Impedance-Ω	50		
Polarization	Vertical		
Max.Power-W	20		
Connector	N female		
Dimensions-mm	Φ25×770		
Weight-Kg	0.33		
Mast Diameter-mm	Φ40 to Φ50		

Installation Sketch



1.antenna

2.user-provide mast

3.bracket

4.connector



Kenbotong Communication LTD.

Addr : Kenbotong Technology Park, No.2 Chanxiu Road, Foshan, Guangdong, China 528061

Tel: +86-757-82219788, 82126632 Fax: +86-757-82212072

Email: kbt@kenbotong.com web: <http://www.kenbotong.com>