

TQJ-2458D5

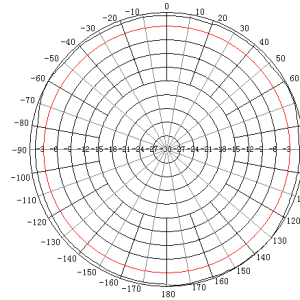
Dual Band Fiberglass Omni Antenna Technical Sheet



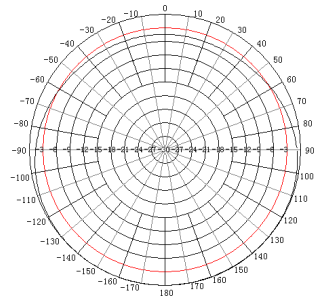
Applications

- 2.4GHz/5GHz WiFi system
- IEEE802.11a/b/g
- Point to multipoint application

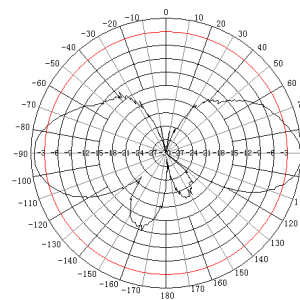
Typical Patterns



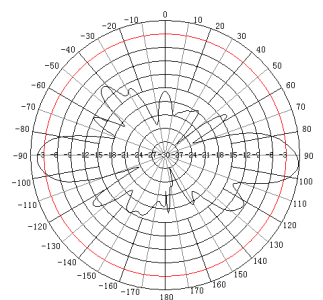
2.4GHz H Plane



5GHz H Plane



2.4GHz E Plane

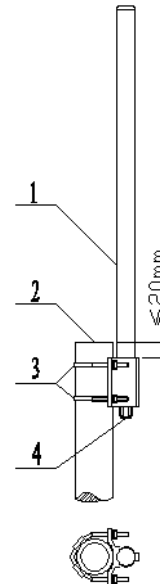


5GHz E Plane

Specifications

Model	TQJ-2458D5		
Freq.Range-MHz	2400-2483	5150-5350	5350-5850
Gain-dBi	5	5	6
Ver.Beamwidth-°	E: 30	E: 30	E:25
VSWR	≤2		
Impedance-Ω	50		
Polarization	Vertical		
Max.Power-W	20		
Connector	N female		
Dimensions-mm	Φ25×510		
Weight-Kg	0.32		
Mast Diameter-mm	Φ40 to Φ50		

Installation Sketch



- 1.antenna
- 2.user-provide mast
- 3.bracket
- 4.connector



Kenbotong Communication LTD.

Addr : Kenbotong Technology Park, No.2 Chanxiu Road, Foshan, Guangdong, China 528061
 Tel: +86-757-82219788, 82126632 Fax: +86-757-82212072
 Email: kbt@kenbotong.com web: http://www.kenbotong.com