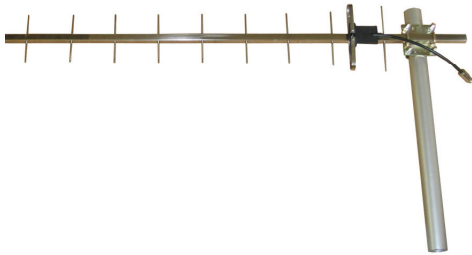


TDJ-900E

Yagi Antenna

Technical Sheet



The picture is for reference only, please kindly consult with the real products.

Application

- 806-960MHz band
- Signal relay
- Wireless signal transmission

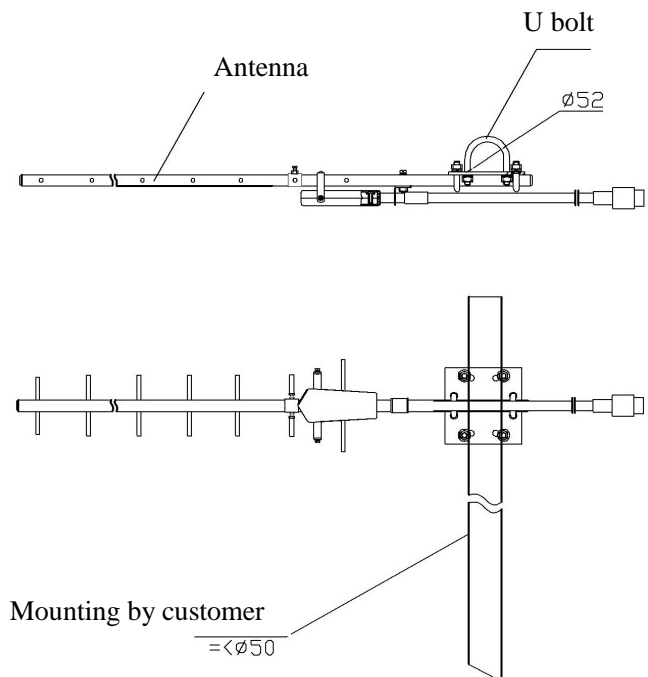
Feature

- Long distance transmission
- All weather operation
- Stainless steel, Corrosion resistance
- Vertical or horizontal polarization
- Mast mounting kits

Specification

Model	TDJ-900E
Freq.Range-MHz	806-960
Bandwidth-MHz	70
Gain-dBi	11.6
Ver.Beamwidth-°	40
Hor.Beamwidth-°	36
F/B Ratio-dB	≥18
VSWR	≤1.5
Impedance-Ω	50
Polarization	Vertical or Horizontal
Max.Power-W	100
Connector type	N Female or customized
Length-m	1.1
Weight-Kg	1
Mast Diameter-mm	φ 40 to 50

Installation Sketch



Kenbotong Communication LTD.

Addr : Kenbotong Technology Park, No2. Chanxiu Road, Foshan, Guangdong, China 528061
 Tel: +86-757-82219788, 82126632 Fax: +86-757-82212072
 Email: kbt@kenbotong.com web: <http://www.kenbotong.com>