

# TDJ-5158G

## 5.1/5.5/5.8GHz Panel Antenna

### Technical Sheet



#### Applications

- 5.8 GHz WLAN System
- 5GHz ISM Band
- IEEE 802.11a,g

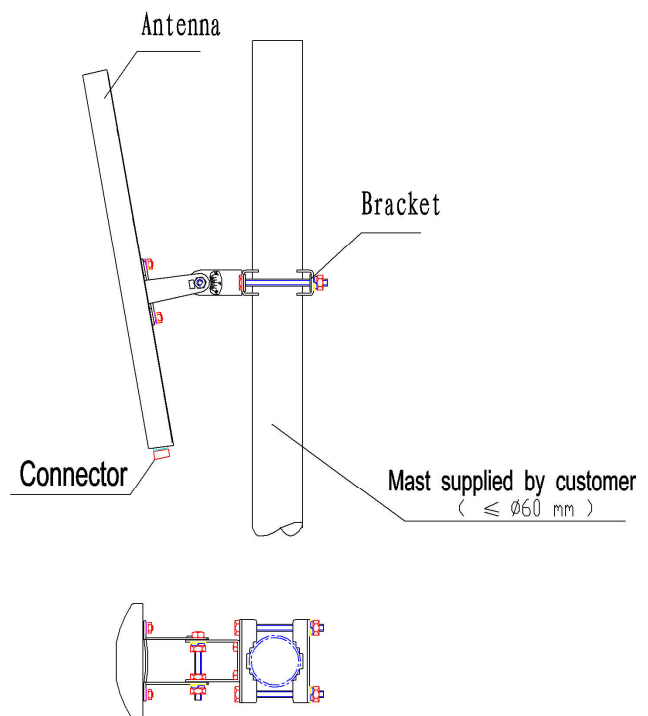
#### Features

- High Gain, Low VSWR
- Light Weight, Small Size
- Corrosion resistance
- Supplied with Down-tilt Mast Mounting Kit

#### Specifications

Model	TDJ-5158G
Freq.Range-MHz	5150-5850
Bandwidth-MHz	700
Gain-dBi	18
VSWR	≤1.7
Hor.Beamwidth-°	60
Ver.Beamwidth-°	7
F/B Ratio-dB	≥25
Impedance-Ω	50
Polarization	Vertical
Max.Power-W	100
Connector	N Female
Dimensions-mm	454x137x32
Weight-Kg	0.7
Pole Diameter-mm	φ50-60

#### Installation Sketch



Kenbotong Communication LTD

Addr: kenbotong Technology Park, NO.2 Chanxiu Road, Foshan, Guangdong, china 528000

Tel: +86-757-82219788, 82126632 Fax: +86-757-82212072

Email: kbt@kenbotong.com web: <http://www.kenbotong.com>