

TDJ-5158BKC60

5.1/5.5/5.8GHz Panel Antenna

Technical Sheet



Applications

- 5.1/5.5/5.8GHz WLAN System
- 5~6GHz UNII/ISM System
- Support 802.11a
- WiFi System

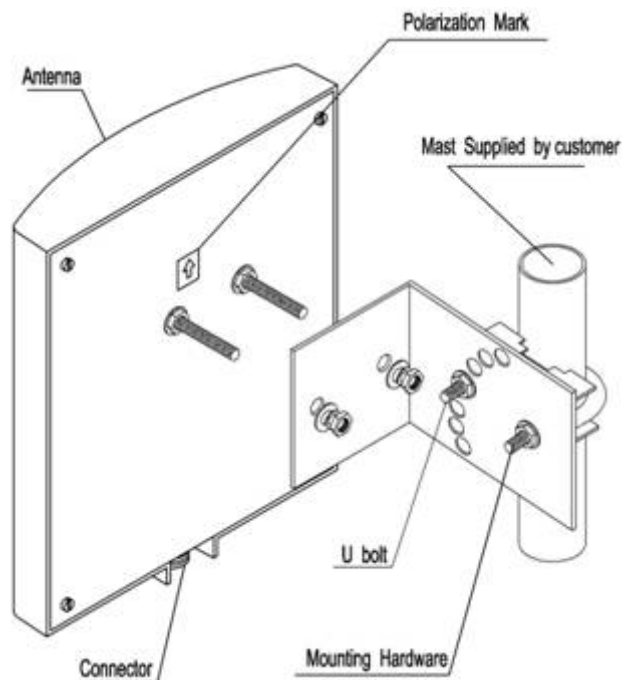
Features

- Broadband, 5.1/5.5/5.8GHz Band
- High Gain, Low VSWR
- Light weight, Small size, Low profile
- Strong corrosion resistance
- Integral N-Female connector
- Supplied with mast mounting kits

Specifications

Model	TDJ-5158BKC60
Freq.Range-MHz	5100~5850
Bandwidth-MHz	750
Gain-dBi	15
Hor.Beamwidth-°	60
Ver.Beamwidth-°	16
F/B Ratio-dB	≥25
VSWR	≤1.5
Impedance-Ω	50
Polarization	Vertical
Max.Power-W	100
Connector	N Female
Dimension-mm	210×190×50
Weight-Kg	1.1
Mast Diameter-mm	φ 40-50

Installation Sketch



Kenbotong Communication LTD.

Addr: kenbotong Technology Park, NO.2 Chanxiu Road, Foshan, Guangdong, China 528000

Tel: +86-757-82219788, 82126632 Fax: +86-757-82212072

Email: kbt@kenbotong.com web: <http://www.kenbotong.com>