

# TDJ-5158BKC

## 5GHz Panel Antenna

### Technical Sheet



#### Applications

- 5.1/5.5/5.8GHz WLAN/Wireless Access systems
- 5~6GHz UNII/ISM Frequency
- Wireless Bridges
- Long distance Client

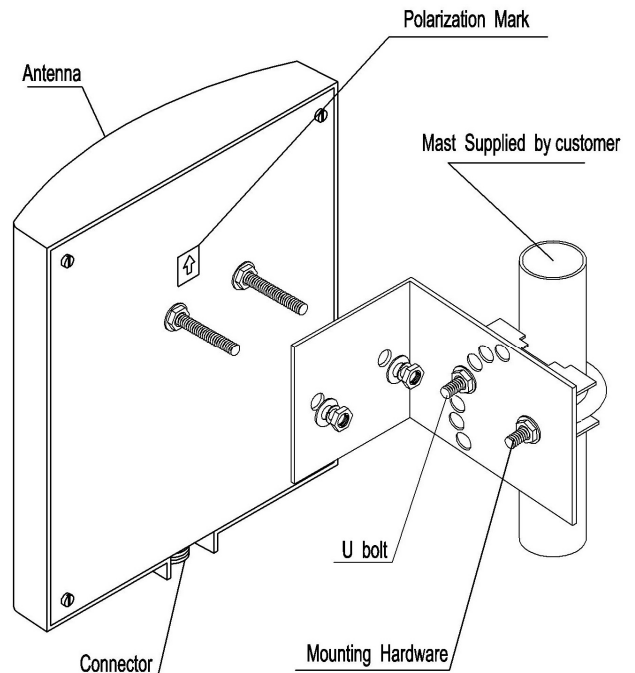
#### Features

- 5.1/5.5/5.8GHz Tri-band, High Gain
- Light weight, Compact Size
- All weather operation
- Mast mount kits

#### Specifications

Model	TDJ-5158BKC
Freq. Range-MHz	5100~5850
Bandwidth-MHz	750
Gain-dBi	18
Vertical Beamwidth-°	20
Horizontal Beamwidth-°	20
F/B Ratio-dB	≥25
VSWR	≤1.5
Impedance-Ω	50
Polarization	Vertical
Max. Power-W	100
Connector Type	N-Female
Dimension-mm	190×216×50
Weight-Kg	1.1
Pole Diameter-mm	φ 40-50

#### Install Sketch



Kenbotong Communication LTD.

Addr : kenbotong Technology Park, NO.2 Chanxiu Road, Foshan, Guangdong, China 528000  
 Tel: +86-757-82219788, 82126632 Fax: +86-757-82212072  
 Email: kbt@kenbotong.com web: <http://www.kenbotong.com>