

TDJ-2458BFA-Y

Panel Antenna

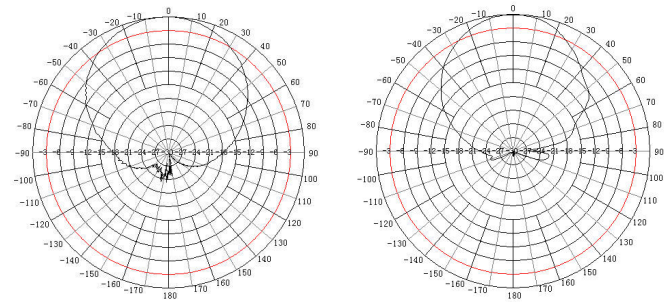
Technical Sheet



Applications

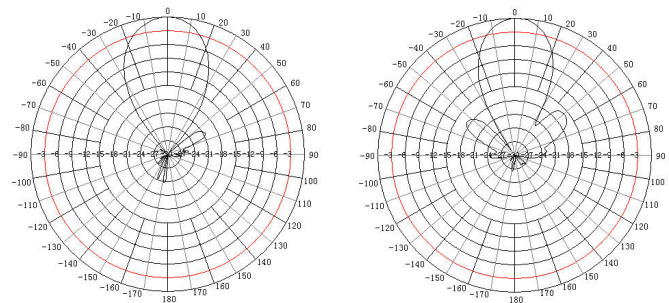
- 2.4GHz Wlan Wi-Fi System
- Wireless hotspot coverage/Indoor coverage
- Indoor or Outdoor used

Typical Pattern



2.4GHz H Plane

5GHz H Plane



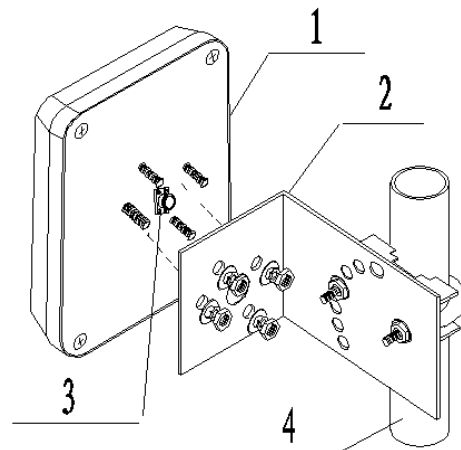
2.4GHz E Plane

5GHz E Plane

Specification

Model	TDJ-2458BFA-Y	
Freq.Range-MHz	2400~2500	5150~5850
Bandwidth-MHz	100	700
Gain-dBi	≥11	≥12
Beamwidth-°	E:30 H:65	E:25 H:50
F/B Ratio-dB	≥23	
VSWR	≤1.8	
Impedance-Ω	50	
Polarization	Vertical	
Max.Power-W	20	
Connector	N Female	
Dimension-mm	140x120x40	
Weight-Kg	0.4	
Mounting way	Wall mount	

Installation Sketch



- 1. Antenna
- 2. Fixity
- 3. Connector
- 4. Mast(user-provide, Φ40~50mm)



Kenbotong Communication LTD.

Addr : Kenbotong Technology Park, No.2 Chanxiu Road, Foshan, Guangdong, China 528061
 Tel: +86-757-82219788, 82126632 Fax: +86-757-82212072
 Email: kbt@kenbotong.com web: <http://www.kenbotong.com>