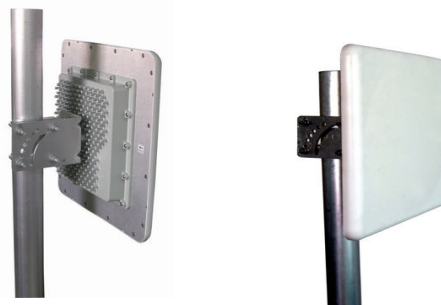


Sector Panel Antenna

Technical Sheet

Main Features

- WLAN
- 2300 to 2700MHz band
- Firm structure, Stable performance
- Low VSWR, High gain
- Small size, Easy to mount



TDJ-2400BKT-C-W

TDJ-2400BKT1-W

TDJ-2400BKT2-W

Electrical Specifications

Model	TDJ-2400BKT-C-W	TDJ-2400BKT1-W	TDJ-2400BKT2-W
Freq.Range-MHz	2300 to 2700		
Bandwidth-MHz	400		
Gain-dBi	18		
Polarization	Vertical or Horizontal		
Beamwidth-°	Hor.Plane	20	
	Ver.Plane	20	
F/B Ratio-dB	≥28		
VSWR	≤1.8		
Impedance-Ω	50		
Power Capacity-W	50		

Mechanical & Environmental Specifications

Connector	SMA male or customized	SMA female	N female
Dimensions(LxWxD)-mm	306×306×25		
Weight-Kg	2.6(with bracket)	1.4(with bracket)	1.4(with bracket)
Mounting	Mast	Mast	Mast
Mast Diameter-mm	Φ40 to Φ50	Φ40 to Φ50	Φ40 to Φ50
Operating Temperature-°C	-40 to +60		
Relative Humidity	5% to 95%		
Rated Wind Velocity-m/s	60		



Kenbotong Communication LTD.

Addr: Kenbotong Technology Park, No.2 Chanxiu Road, Foshan, Guangdong, China 528061

Tel: +86-757-82219788, 82126632 Fax: +86-757-82212072

Email: kbt@kenbotong.com web: <http://www.kenbotong.com>