

# TDJ-2400BKF-Y

## 2.4GHz Wall Mount Antenna

### Technical Sheet



#### Applications

- 2.4 GHz WLAN System
- 2.4GHz ISM Band
- WiFi System
- Point to Point or Point to Multipoint

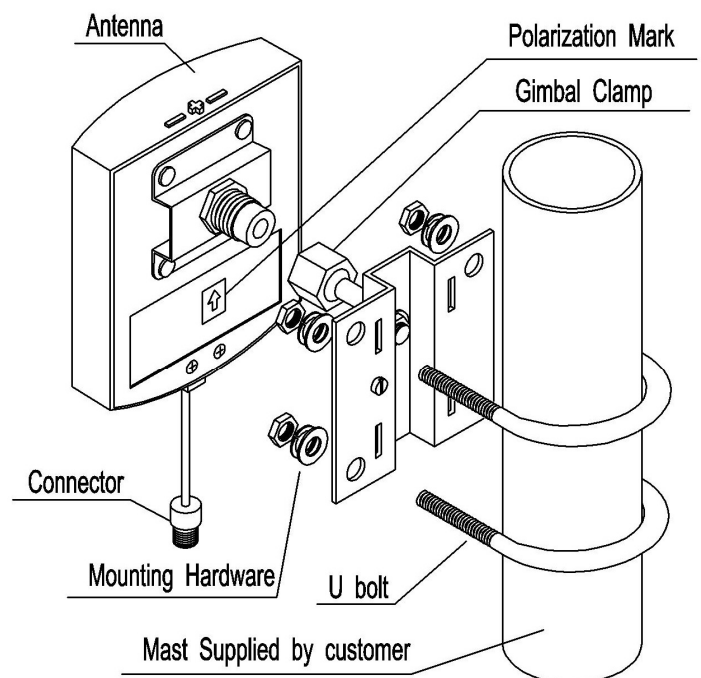
#### Features

- Low VSWR
- Compact Size, Good Appearance
- All Weather Operation
- Designed by Broadband Technology

#### Specifications

Model	TDJ-2400BKF-Y
Freq.Range-MHz	2400 to 2483
Bandwidth-MHz	83
Gain-dBi	8.5
Hor.Beamwidth-°	80
Ver.Beamwidth-°	60
F/B Ratio-dB	≥20
VSWR	≤1.5
Impedance-Ω	50
Polarization	Vertical
Max.Power-W	50
Connector	RP-TNC Female or Customized
Dimensions-mm	125×97×30
Weight-g	210
Pole Diameter-mm	φ40 to 50

#### Installation Sketch



Kenbotong Communication LTD.

Addr : Kenbotong Technology Park, No.2 Chanxiu Road, Foshan, Guangdong, China 528061  
 Tel: +86-757-82219788, 82126632 Fax: +86-757-82212072  
 Email: kbt@kenbotong.com web: <http://www.kenbotong.com>