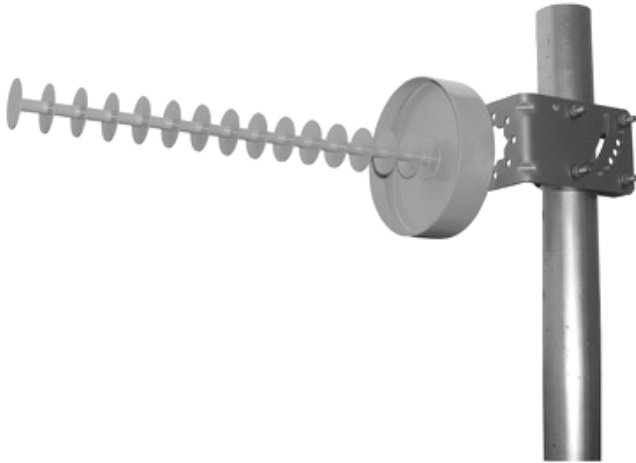


# TDJ-2400B18

## 2.4GHz Directional Antenna

### Technical sheet



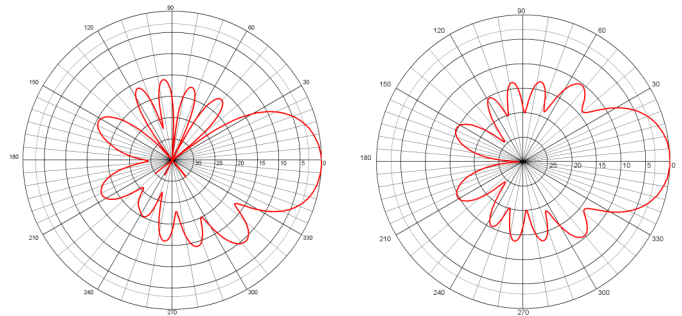
#### Applications

- 2.4 GHz WLAN system
- 2.4GHz ISM band
- IEEE 802.11b,g

#### Features

- High gain, Low VSWR
- Light weight, Small size
- Strong corrosion resistance ability
- DC grounded protection
- Supplied with down-tilt mast mounting kit

#### Reference Patterns



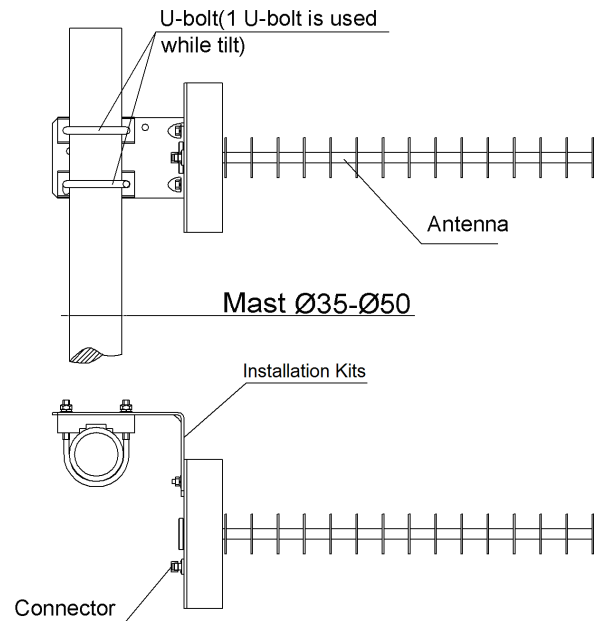
E-plane

H-plane

#### Specifications

Model	TDJ-2400B18
Freq.Range-MHz	2400 to 2483
Bandwidth-MHz	83
Gain-dBi	14
Beamwidth -°	E:35 H:35
F/B Ratio-dB	≥25
VSWR	≤1.7
Impedance-Ω	50
Polarization	Linear(Vertical or Horizontal)
Power capacity-W	50
Connector	N-Female or customized
Dimension-cm	(DiameterxLength)14x39
Weight-Kg	0.9
Pole Diameter-mm	φ 35 to 50

#### Installation Sketch



1. Mount the antenna to the mast pole;
2. Adjust and tilt for the best performance;
3. Only 1 U-bolt is used while tilt.

