

TDJ-2400B

2.4GHz Backfire Antenna

Technical Sheet



Applications

- 2.4 GHz ISM Band
- IEEE 802.11b and 802.11g Wireless LAN
- Public Wireless Hotspot
- WiFi
- Client antenna

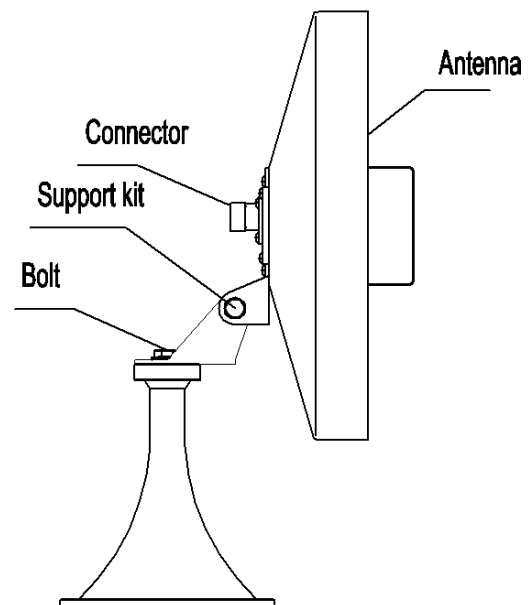
Features

- High Gain to 16dBi
- Small Size, Low Profile
- Easy to Used, Just Put on the Desktop
- Integral N-Female Connector

Specifications

Model	TDJ-2400B
Freq. Range-MHz	2400~2483
Bandwidth-MHz	83
Gain-dBi	16
Beamwidth-°	E:24 H:26
F/B-dB	≥30
VSWR	≤1.5
Impedance-Ω	50
Polarization	Vertical or Horizontal
Max. Power-W	100
Connector Type	N-Female
Dimension-mm	φ 260
Weight-Kg	2

Install Sketch



Kenbotong Communication LTD.

Addr : Kenbotong Technology Park, No.2 Chanxiu Road, Foshan, Guangdong, China 528061

Tel: +86-757-82219788, 82126632 Fax: +86-757-82212072

Email: kbt@kenbotong.com web: <http://www.kenbotong.com>