

# TDJ-1800C7

## Yagi Antenna

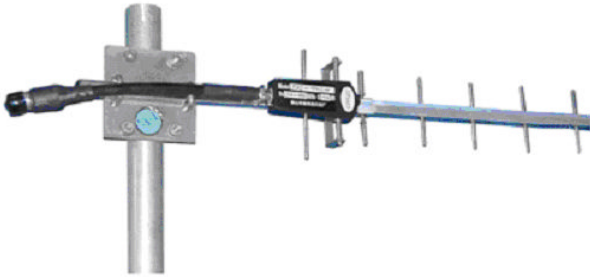
### Technical Sheet

#### Applications

- 1700MHz/ 1900MHz band
- Long distance terminal antenna

#### Features

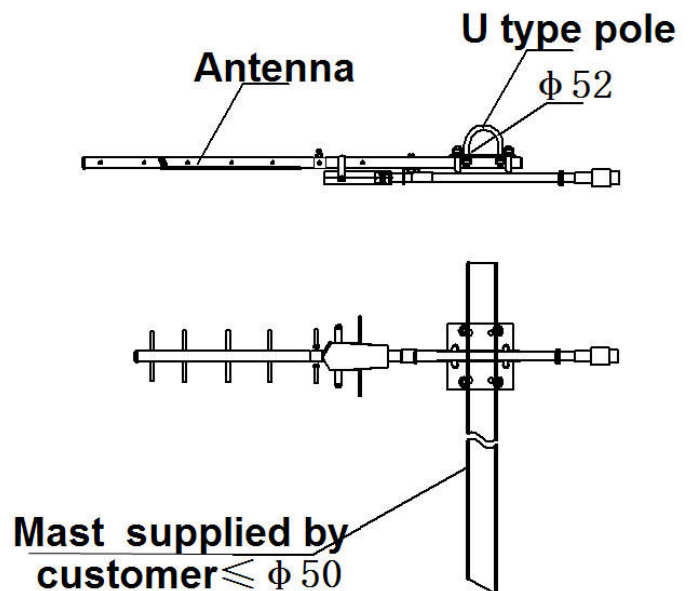
- Broad band, high gain, low VSWR
- Good adaptability to environment
- Extend a cable
- Vertical or horizontal polarization



#### Specifications

|                  |                        |
|------------------|------------------------|
| Model            | TDJ-1800C7             |
| Elements         | 7                      |
| Freq.Range-MHz   | 1710~1990              |
| Gain-dBi         | 11.2                   |
| VSWR             | ≤1.5                   |
| Ver.Beamwidth -° | 40                     |
| Hor.Beamwidth-°  | 48                     |
| F/B Ratio-dB     | ≥16                    |
| Impedance-Ω      | 50                     |
| Polarization     | Vertical or Horizontal |
| Max.Powe -W      | 100                    |
| Connector        | N Female or Customized |
| Length-cm        | 52                     |
| Weight-Kg        | 0.66                   |
| Pole Diameter-mm | φ 40~50                |

#### Installation Sketch



Kenbotong Communication LTD.

Addr: Kenbotong Technology Park, No2. Chanxiu Road, Foshan, Guangdong, China 528061

Tel: +86-757-82219788, 82126632 Fax: +86-757-82212072

Email: kbt@kenbotong.com web: <http://www.kenbotong.com>