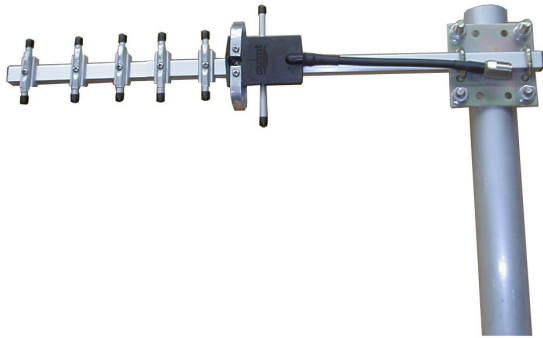


TDJ-1800ACY7

Yagi Antenna

Technical Sheet



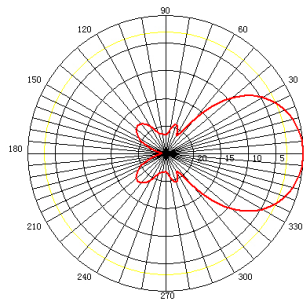
Applications

- GSM1800 /PHS
- Repeater System
- Long Distance Communication

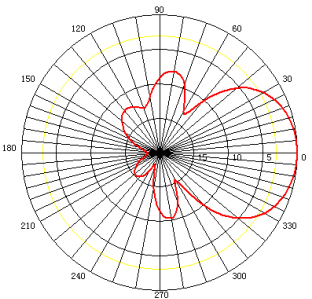
Features

- Broadband, Low VSWR
- Vertical or Horizontal Installation
- Aluminum Alloyed Elements
- N- Female Connector with Pigtail or Customized
- Includes Mast Mounting Hardware

E-Plane



H-Plane



Specifications

Model	TDJ-1800ACY7
Freq. Range-MHz	1710~1880
Bandwidth-MHz	170
Gain-dBi	10
Beamwidth-°	E:48 H:54
F/B Ratio-dB	≥14
VSWR	≤1.50
Impedance-Ω	50
Polarization	Vertical or Horizontal
Max. Power-W	100
Connector Type	N Female or Customization
Dimension-cm	43(Depending on Frequency)
Weight-Kg	0.55(Depending on Frequency)
Pole Diameter-mm	φ 40~50

Installation Sketch

