

# TDJ-1200J15

## Panel Antenna

### Technical Sheet



#### Applications

- 1200MHz communication system
- Wireless video transmission
- Cellular coverage

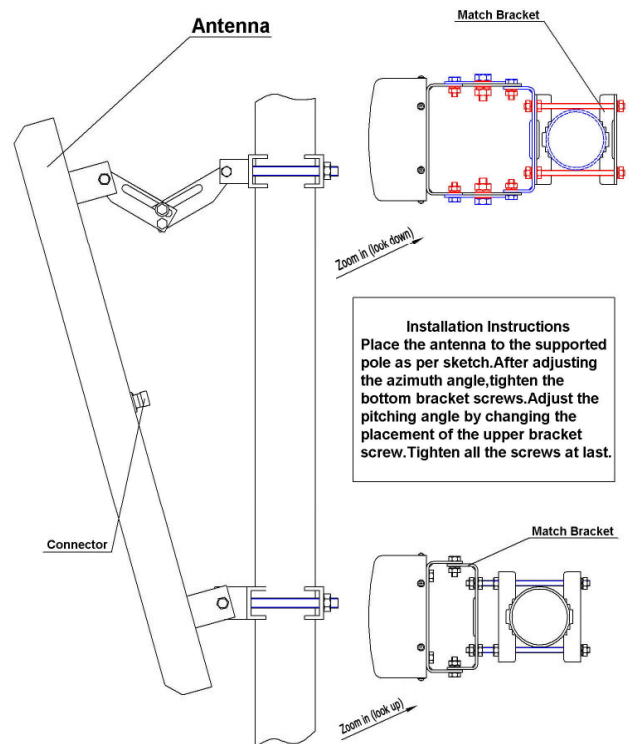
#### Features

- High gain, Low VSWR
- Fiberglass radome, Strong corrosion resistance
- Heavy-duty structure, integral N female connector
- Supplied with down-tilt bracket

#### Specifications

Model	TDJ-1200J15
Freq.Range-MHz	1060-1300
Bandwidth-MHz	80
Gain-dBi	14
Hor.Beamwidth-°	120
Ver.Beamwidth-°	10
F/B Ratio-dB	≥25
VSWR	≤1.5
Impedance-Ω	50
Polarization	Vertical
Max.Power-W	100
Connector	N female
Dimensions-mm	1230×190×80
Weight-Kg	8
Mast Diameter-mm	φ40 to 75

#### Installation Sketch



Kenbotong Communication LTD.

Addr: Kenbotong Technology Park, No2. Chanxiu Road, Foshan, Guangdong, China 528061

Tel: +86-757-82219788, 82126632 Fax: +86-757-82212072

Email: kbt@kenbotong.com web: <http://www.kenbotong.com>