

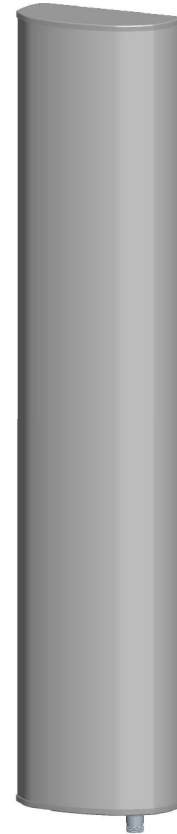


Single-band Panel	806~896
Vertical Polarization	V
Half-power Beam Width	90°
Fixed Electrical Downtilt	0°

VPol 806~896MHz 90° 15dBi 0° Tilt

Electrical specifications	KBT90VP15-08AT0
Frequency range (MHz)	806~896
Polarization	Vertical
Gain (dBi)	15
Electrical Downtilt (°)	0
Half-power beam width (°)	Horizontal:90 Vertical:10
Sidelobe suppression for first sidelobe above main beam (dB)	≥15
Front-to-back ratio (dB)	≥25
Impedance (Ω)	50
VSWR	≤1.4
Intermodulation IM3 (2×43dBm carrier)	≤-150dBc
Maximum power (W)	500
Lighting protection	DC Ground

Mechanical specifications	
Connector	7/16DIN Female
Connector position	Bottom
Height/width/depth (mm)	1890×270×137
Packing size (mm)	2160×330×220
Weight (kg)	16.5
Radome material	UPVC
Radome color	Gray
Mechanical tilt (°)	0~12
Operating temperature (°C)	-40~60
Rated wind velocity (m/s)	60
Suitable pole diameter (mm)	50~115
Mounting kit	JM-900BZ



806~896
V

7/16

806~896MHz: VPol

