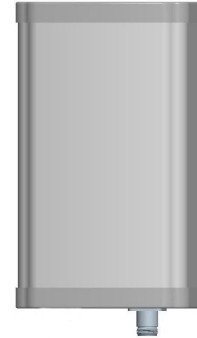


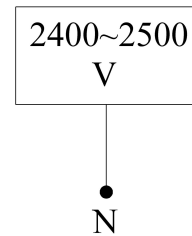


**VPol 2400~2500MHz 90° 11dBi 0° Tilt**

<b>Electrical specifications</b>	<b>KBT90VP11-24RT0</b>
Frequency range (MHz)	2400~2500
Polarization	Vertical
Gain (dBi)	11
Electrical Downtilt (°)	0
Half-power beam width (°)	Horizontal:90 Vertical:30
Sidelobe suppression for first sidelobe above main beam (dB)	N/A
Front-to-back ratio (dB)	≥23
Impedance (Ω)	50
VSWR	≤1.5
Maximum power (W)	200



<b>Mechanical specifications</b>	
Connector	N Female
Connector position	Bottom
Height/width/depth (mm)	280×128×56
Packing size (mm)	400×230×160
Weight (kg)	1.0
Radome material	UPVC
Radome color	Gray
Mechanical tilt (°)	0~15
Operating temperature (°C)	-40~60
Rated wind velocity (m/s)	60
Suitable pole diameter (mm)	35~75
Mounting kit	JM-2400RZ1



**2400~2500MHz: VPol.**

