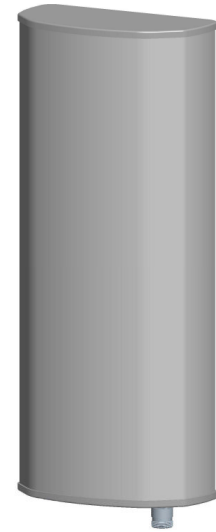




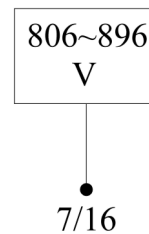
Single-band Panel	806~896
Vertical Polarization	V
Half-power Beam Width	90°
Fixed Electrical Downtilt	0°

VPol 806~896MHz 90° 11dBi 0° Tilt

Electrical specifications	KBT90VP11-08AT0
Frequency range (MHz)	806~896
Polarization	Vertical
Gain (dBi)	11
Electrical Downtilt (°)	0
Half-power beam width (°)	Horizontal:90 Vertical:31
Front-to-back ratio (dB)	≥23
Impedance (Ω)	50
VSWR	≤1.4
Intermodulation IM3 (2×43dBm carrier)	≤-150dBc
Maximum power (W)	500
Lighting protection	DC Ground



Mechanical specifications	
Connector	7/16DIN Female
Connector position	Bottom
Height/width/depth (mm)	650×270×137
Packing size (mm)	740×350×205
Weight (kg)	9.2
Radome material	UPVC
Radome color	Gray
Mechanical tilt (°)	0~15
Operating temperature (°C)	-40~60
Rated wind velocity (m/s)	60
Suitable pole diameter (mm)	50~115
Mounting kit	JM-900BZ1



806~896MHz: VPol

