

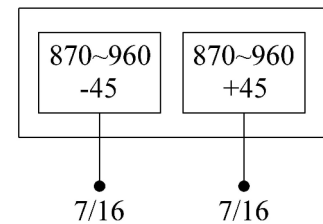
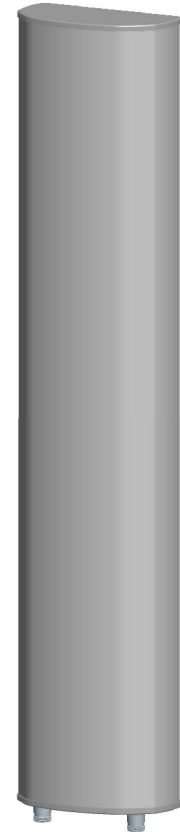


Single-band Panel	870~960
Dual Polarization	X
Half-power Beam Width	90°
Fixed Electrical Downtilt	0°

XPoI 870~960MHz 90° 15dBi 0° Tilt

Electrical specifications	KBT90DP15-09AT0
Frequency range (MHz)	870~960
Polarization	±45°
Gain (dBi)	2×15
Electrical Downtilt (°)	0
Half-power beam width (°)	Horizontal:90 Vertical:9.5
Sidelobe suppression for first sidelobe above main beam (dB)	≥15
Front-to-back ratio (dB)	≥25
Cross-polar discrimination (dB)	≥15(±60°≥10)
Isolation (dB)	≥30
Impedance (Ω)	50
VSWR	≤1.4
Intermodulation IM3 (2×43dBm carrier)	≤-150dBc
Maximum power (W)	500
Lighting protection	DC Ground

Mechanical specifications	
Connector	2×7/16DIN Female
Connector position	Bottom
Height/width/depth (mm)	1890×270×137
Packing size (mm)	2160×330×220
Weight (kg)	16.5
Radome material	UPVC
Radome color	Gray
Mechanical tilt (°)	0~12
Operating temperature (°C)	-40~60
Rated wind velocity (m/s)	60
Suitable pole diameter (mm)	50~115
Mounting kit	JM-900BZ



870~960MHz: ±45° Polarization

