

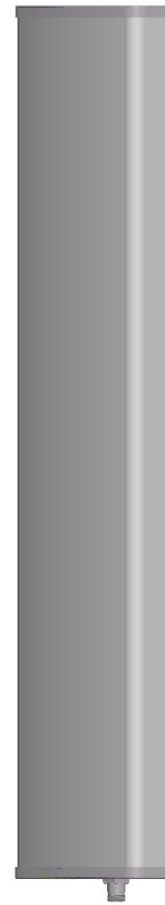


<b>Dual-band Panel</b>	<b>824~960</b>
<b>Vertical Polarization</b>	<b>V</b>
<b>Half-power Beam Width</b>	<b>65°</b>
<b>Fixed Electrical Downtilt</b>	<b>0°</b>

**VPol 824~960MHz 65° 16dBi 0° Tilt**

<b>Electrical specifications</b>	<b>KBT65VP16-0809AT0</b>	
Frequency range (MHz)	824~896	870~960
Polarization	Vertical	
Gain (dBi)	15.5	16
Electrical Downtilt (°)	0	
Half-power beam width (°)	Horizontal:68 Vertical:12	Horizontal:65 Vertical:11.5
Sidelobe suppression for first sidelobe above main beam (dB)	≥15	
Front-to-back ratio (dB)	≥25	
Impedance (Ω)	50	
VSWR	≤1.4	
Intermodulation IM3 (2×43dBm carrier)	≤-150dBc	
Maximum power (W)	500	
Lighting protection	DC Ground	

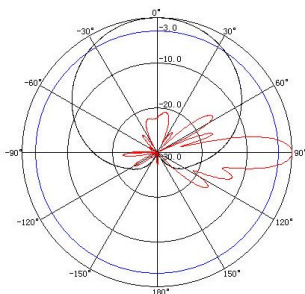
<b>Mechanical specifications</b>	
Connector	7/16DIN Female
Connector position	Bottom
Height/width/depth (mm)	1600×280×85
Packing size (mm)	1900×375×160
Weight (kg)	15
Radome material	UPVC
Radome color	Gray
Mechanical tilt (°)	0~12
Operating temperature (°C)	-40~60
Rated wind velocity (m/s)	60
Suitable pole diameter (mm)	50~115
Mounting kit	JM-900BZ



824~960  
V

7/16

**824~896MHz: VPol**



**870~960MHz: VPol**

