

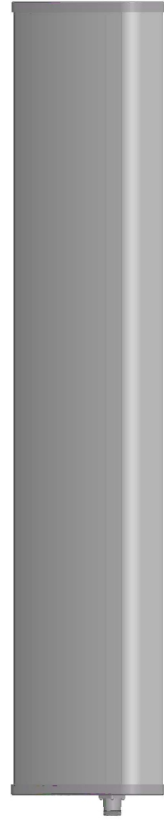


| | |
|----------------------------------|----------------|
| Single -band Panel | 870~960 |
| Vertical Polarization | V |
| Half-power Beam Width | 65° |
| Fixed Electrical Downtilt | 0° |

VPol 870~960MHz 65° 15dBi 0° Tilt

| Electrical specifications | KBT65VP15-09AT0 |
|--|------------------------------|
| Frequency range (MHz) | 870~960 |
| Polarization | Vertical |
| Gain (dBi) | 15 |
| Electrical Downtilt (°) | 0 |
| Half-power beam width (°) | Horizontal:65 Vertical:13 |
| Sidelobe suppression for first sidelobe above main beam (dB) | ≥15 |
| Front-to-back ratio (dB) | ≥25 |
| Impedance (Ω) | 50 |
| VSWR | ≤1.4 |
| Intermodulation IM3 (2×43dBm carrier) | ≤-150dBc |
| Maximum power (W) | 500 |
| Lighting protection | DC Ground |

| Mechanical specifications | |
|----------------------------------|----------------|
| Connector | 7/16DIN Female |
| Connector position | Bottom |
| Height/width/depth (mm) | 1270×280×85 |
| Packing size (mm) | 1600×375×160 |
| Weight (kg) | 12 |
| Radome material | UPVC |
| Radome color | Gray |
| Mechanical tilt (°) | 0~15 |
| Operating temperature (°C) | -40~60 |
| Rated wind velocity (m/s) | 60 |
| Suitable pole diameter (mm) | 50~115 |
| Mounting kit | JM-900BZ |



870~960
V

7/16

870~960MHz: VPol

