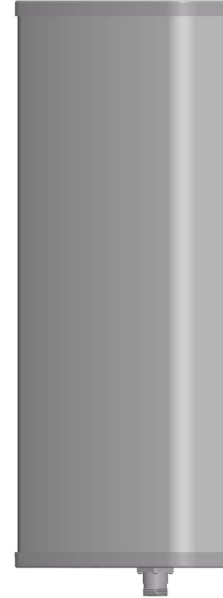




Dual-band Panel	824~960
Vertical Polarization	V
Half-power Beam Width	65°
Fixed Electrical Downtilt	0°

VPol 824~960MHz 65° 12dBi 0° Tilt

Electrical specifications	KBT65VP12-0809AT0	
Frequency range (MHz)	824~896	870~960
Polarization	Vertical	
Gain (dBi)	12	
Electrical Downtilt (°)	0	
Half-power beam width (°)	Horizontal:68 Vertical:27	Horizontal:65 Vertical:25
Sidelobe suppression for first sidelobe above main beam (dB)	≥15	
Front-to-back ratio (dB)	≥25	
Impedance (Ω)	50	
VSWR	≤1.4	
Intermodulation IM3 (2×43dBm carrier)	≤-150dBc	
Maximum power (W)	500	
Lighting protection	DC Ground	

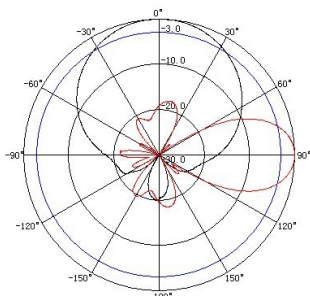


Mechanical specifications	
Connector	7/16DIN Female
Connector position	Bottom
Height/width/depth (mm)	650×280×85
Packing size (mm)	740×330×150
Weight (kg)	9.5
Radome material	UPVC
Radome color	Gray
Mechanical tilt (°)	0~15
Operating temperature (°C)	-40~60
Rated wind velocity (m/s)	60
Suitable pole diameter (mm)	50~115
Mounting kit	JM-900BZ1

824~960
V

7/16

824~896MHz: VPol



870~960MHz: VPol

