

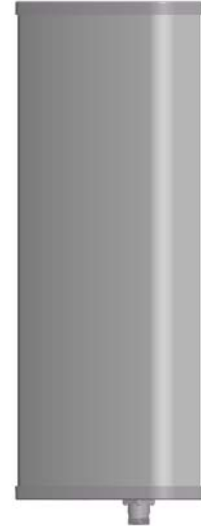


**KENBOTONG COMMUNICATION LTD.**

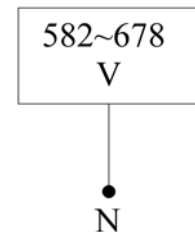
<b>Single-band Panel</b>	<b>582~678</b>
<b>Vertical Polarization</b>	<b>V</b>
<b>Half-power Beam Width</b>	<b>65°</b>
<b>Fixed Electrical Downtilt</b>	<b>0°</b>

VPol 582~678MHz 65° 12dBi 0° Tilt

<b>Electrical specifications</b>	<b>KBT65VP12-06RT0</b>
Frequency range (MHz)	582~678
Polarization	Vertical
Gain (dBi)	12
Electrical Downtilt (°)	0
Half-power beam width (°)	Horizontal:65 Vertical:32
Sidelobe suppression for first sidelobe above main beam (dB)	N/A
Front-to-back ratio (dB)	≥20
Impedance (Ω)	50
VSWR	≤1.5
Intermodulation IM3 (2×43dBm carrier)	≤-150dBc
Maximum power (W)	500
Lighting protection	DC Ground



<b>Mechanical specifications</b>	
Connector	N Female
Connector position	Bottom
Height/width/depth (mm)	760×320×80
Packing size (mm)	860×420×200
Weight (kg)	5.3
Radome material	UPVC
Radome color	Gray
Mechanical tilt (°)	0~10
Operating temperature (°C)	-40~60
Rated wind velocity (m/s)	60
Suitable pole diameter (mm)	50~75
Mounting kit	JM-VA



**582~678MHz: VPol**

