

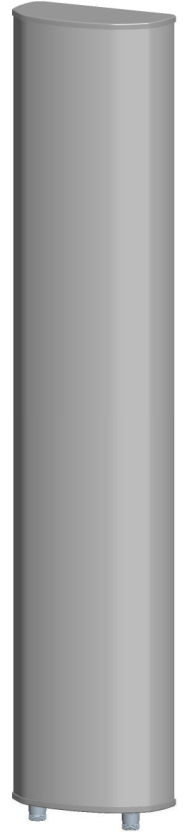


KENBOTONG COMMUNICATION LTD.

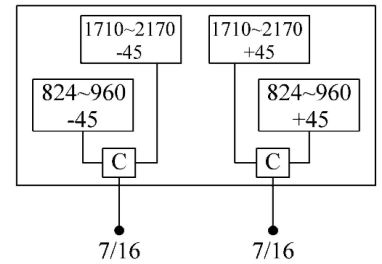
| | | |
|----------------------------------|----------------|------------------|
| Multi-band Panel | 824~960 | 1710~2170 |
| Dual Polarization | X | X |
| Half-power Beam Width | 65° | 65° |
| Fixed Electrical Downtilt | 0° | 0° |

XXPo1 824~960/1710~2170MHz IC 65° 17.5/17.5dBi 0° /0° Tilt

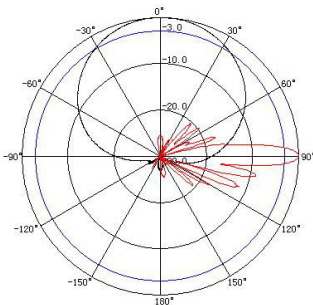
| Electrical specifications | KBT65DP1818-0820AT0-C | | | | |
|--|-----------------------|---------------------|---------------------|-------------------|---------------------|
| Frequency range (MHz) | 824~896 | 870~960 | 1710~1880 | 1850~1990 | 1920~2170 |
| Polarization | ±45° | | | | |
| Gain (dBi) | 2×17 | 2×17.5 | 2×17 | 2×17 | 2×17.5 |
| Electrical Downtilt (°) | 0 | | 0 | | |
| Half-power beam width (°) | Hor.:68 Ver.:7 | Hor.:65 Ver.:6.5 | Hor.:68 Ver.:6.5 | Hor.:65 Ver.:6 | Hor.:61 Ver.:5.5 |
| Sidelobe suppression for first sidelobe above main beam (dB) | ≥16 | | ≥15 | | |
| Front-to-back ratio (dB) | ≥25 | | ≥30 | | |
| Cross-polar discrimination (dB) | ≥15(±60°≥10) | | ≥15(±60°≥10) | | |
| Isolation (dB) | ≥28 | | ≥28 | | |
| Impedance (Ω) | 50 | | | | |
| VSWR | ≤1.4 | | ≤1.5 | | |
| Intermodulation IM3 (2×43dBm carrier) | ≤-150dBc | | | | |
| Maximum power (W) | 400 | | 200 | | |
| Lighting protection | DC Ground | | | | |



| Mechanical specifications | |
|-----------------------------|------------------|
| Connector | 2×7/16DIN Female |
| Connector position | Bottom |
| Height/width/depth (mm) | 2530×270×137 |
| Packing size (mm) | 2870×330×220 |
| Weight (kg) | 23 |
| Radome material | UPVC |
| Radome color | Gray |
| Mechanical tilt (°) | 0~10 |
| Operating temperature (°C) | -40~60 |
| Rated wind velocity (m/s) | 60 |
| Suitable pole diameter (mm) | 50~115 |
| Mounting kit | JM-900BZ |



824~960MHz: ±45° Pol.



1710~2170MHz: ±45° Pol.

