

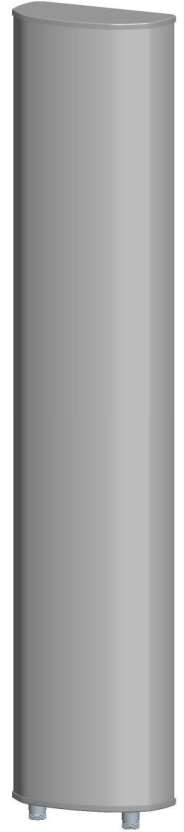


**KENBOTONG COMMUNICATION LTD.**

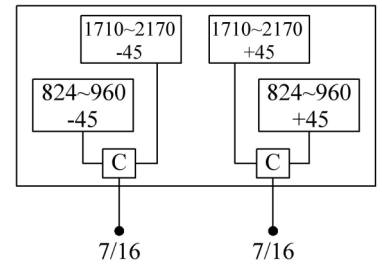
|                                  |                |                  |
|----------------------------------|----------------|------------------|
| <b>Multi-band Panel</b>          | <b>824~960</b> | <b>1710~2170</b> |
| <b>Dual Polarization</b>         | <b>X</b>       | <b>X</b>         |
| <b>Half-power Beam Width</b>     | <b>65°</b>     | <b>65°</b>       |
| <b>Fixed Electrical Downtilt</b> | <b>0°</b>      | <b>0°</b>        |

XXPo1 824~960/1710~2170MHz IC 65° 14/15.5dBi 0° /0° Tilt

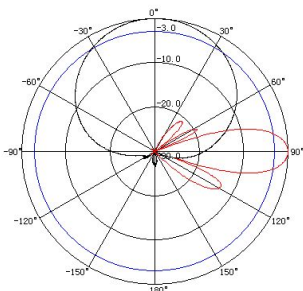
| Electrical specifications                                    | KBT65DP1416-0820AT0-C |                    |                     |                   |                     |
|--|-----------------------|--------------------|---------------------|-------------------|---------------------|
| Frequency range (MHz)  | 824~896               | 870~960            | 1710~1880           | 1850~1990         | 1920~2170           |
| Polarization   | ±45°                  |                    |                     |                   |                     |
| Gain (dBi)   | 2×13.5                | 2×14               | 2×15                | 2×15.5            | 2×15.5              |
| Electrical Downtilt (°)                                      | 0                     |                    | 0                   |                   |                     |
| Half-power beam width (°)                                    | Hor.:68<br>Ver.:16    | Hor.:65<br>Ver.:15 | Hor.:68<br>Ver.:7.5 | Hor.:65<br>Ver.:7 | Hor.:61<br>Ver.:6.5 |
| Sidelobe suppression for first sidelobe above main beam (dB) | ≥15                   |                    | ≥15                 |                   |                     |
| Front-to-back ratio (dB)                                     | ≥25                   |                    | ≥30                 |                   |                     |
| Cross-polar discrimination (dB)                              | ≥15(±60°≥10)          |                    | ≥15(±60°≥10)        |                   |                     |
| Isolation (dB)   | ≥28                   |                    | ≥28                 |                   |                     |
| Impedance (Ω)  | 50                    |                    |                     |                   |                     |
| VSWR   | ≤1.4                  |                    | ≤1.5                |                   |                     |
| Intermodulation IM3<br>(2×43dBm carrier)                     | ≤-150dBc              |                    |                     |                   |                     |
| Maximum power (W)  | 400                   |                    | 200                 |                   |                     |
| Lighting protection  | DC Ground             |                    |                     |                   |                     |



| Mechanical specifications   |                  |
|-----------------------------|------------------|
| Connector                   | 2×7/16DIN Female |
| Connector position          | Bottom           |
| Height/width/depth (mm)     | 1270×270×137     |
| Packing size (mm)           | 1600×330×220     |
| Weight (kg)                 | 15               |
| Radome material             | UPVC             |
| Radome color                | Gray             |
| Mechanical tilt (°)         | 0~15             |
| Operating temperature (°C)  | -40~60           |
| Rated wind velocity (m/s)   | 60               |
| Suitable pole diameter (mm) | 50~115           |
| Mounting kit                | JM-900BZ         |



**824~960MHz: ±45° Pol.**



**1710~2170MHz: ±45° Pol.**

