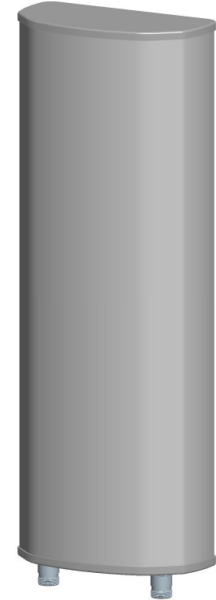




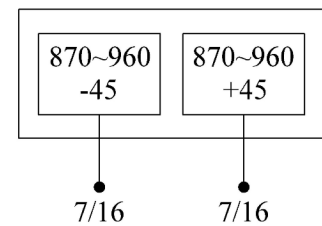
<b>Single-band Panel</b>	<b>870~960</b>
<b>Dual Polarization</b>	<b>X</b>
<b>Half-power Beam Width</b>	<b>65°</b>
<b>Variable Electrical Downtilt</b>	<b>0°-15°</b>

**XPo1 870~960MHz 65° 12.5dBi 0° -15° Tilt**

<b>Electrical specifications</b>	<b>KBT65DP13-09AE</b>
Frequency range (MHz)	870~960
Polarization	±45°
Gain (dBi)	2×12.5
Electrical Downtilt (°)	0~15
Half-power beam width (°)	Horizontal:65 Vertical:27
Sidelobe suppression for first sidelobe above main beam (dB)	0°...5°...10°...15° 18...16...16...15
Front-to-back ratio (dB)	≥25
Cross-polar discrimination (dB)	≥15(±60°≥10)
Isolation (dB)	≥30
Impedance (Ω)	50
VSWR	≤1.5
Intermodulation IM3 (2×43dBm carrier)	≤-150dBc
Maximum power (W)	400
Lighting protection	DC Ground



<b>Mechanical specifications</b>	
Connector	2×7/16DIN Female
Connector position	Bottom
Height/width/depth (mm)	800×270×137
Packing size (mm)	940×360×230
Weight (kg)	11
Radome material	UPVC
Radome color	Gray
Mechanical tilt (°)	0~15
Operating temperature (°C)	-40~60
Rated wind velocity (m/s)	60
Suitable pole diameter (mm)	50~115
Mounting kit	JM-900BZ1
Electrical downtilt adjustment	Manual or by optional RCU



**870~960MHz: ±45° Polarization**

