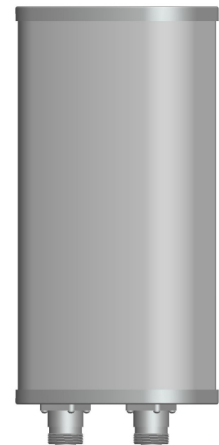




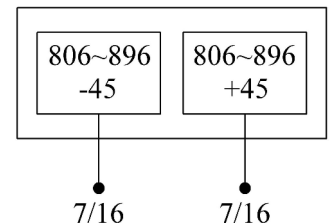
Single-band Panel	806~896
Dual Polarization	X
Half-power Beam Width	65°
Fixed Electrical Downtilt	6°

XPoI 806~896MHz 65° 12dBi 6° Tilt

Electrical specifications	KBT65DP12-08AT6
Frequency range (MHz)	806~896
Polarization	±45°
Gain (dBi)	2×12
Electrical Downtilt (°)	6
Half-power beam width (°)	Horizontal:65 Vertical:30
Sidelobe suppression for first sidelobe above main beam (dB)	≥15
Front-to-back ratio (dB)	≥25
Cross-polar discrimination (dB)	≥15(±60°≥10)
Isolation (dB)	≥30
Impedance (Ω)	50
VSWR	≤1.4
Intermodulation IM3 (2×43dBm carrier)	≤-150dBc
Maximum power (W)	500
Lighting protection	DC Ground



Mechanical specifications	
Connector	2×7/16DIN Female
Connector position	Bottom
Height/width/depth (mm)	650×280×85
Packing size (mm)	740×330×150
Weight (kg)	9.5
Radome material	UPVC
Radome color	Gray
Mechanical tilt (°)	0~15
Operating temperature (°C)	-40~60
Rated wind velocity (m/s)	60
Suitable pole diameter (mm)	50~115
Mounting kit	JM-900BZ1



806~896MHz: ±45° Polarization

