

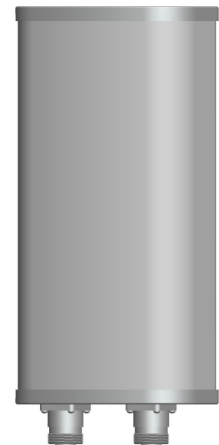


**KENBOTONG COMMUNICATION LTD.**

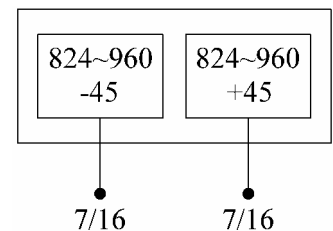
<b>Dual-band Panel</b>	<b>824~960</b>
<b>Dual Polarization</b>	<b>X</b>
<b>Half-power Beam Width</b>	<b>65°</b>
<b>Fixed Electrical Downtilt</b>	<b>0°</b>

XPoI 824~960MHz 65° 12dBi 0° Tilt

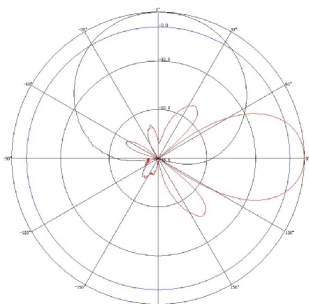
Electrical specifications	KBT65DP12-0809AT0	
Frequency range (MHz)	824~896	870~960
Polarization	±45°	
Gain (dBi)	2×12	
Electrical Downtilt (°)	0	
Half-power beam width (°)	Horizontal:68 Vertical:30	Horizontal:65 Vertical:28
Sidelobe suppression for first sidelobe above main beam (dB)	≥15	
Front-to-back ratio (dB)	≥25	
Cross-polar discrimination (dB)	≥15(±60°≥10)	
Isolation (dB)	≥30	
Impedance (Ω)	50	
VSWR	≤1.4	
Intermodulation IM3 (2×43dBm carrier)	≤-150dBc	
Maximum power (W)	500	
Lighting protection	DC Ground	



Mechanical specifications	
Connector	2×7/16DIN Female
Connector position	Bottom
Height/width/depth (mm)	650×280×85
Packing size (mm)	740×330×150
Weight (kg)	9.5
Radome material	UPVC
Radome color	Gray
Mechanical tilt (°)	0~15
Operating temperature (°C)	-40~60
Rated wind velocity (m/s)	60
Suitable pole diameter (mm)	50~115
Mounting kit	JM-900BZ1



**824~896MHz: ±45° Polarization**



**870~960MHz: ±45° Polarization**

