

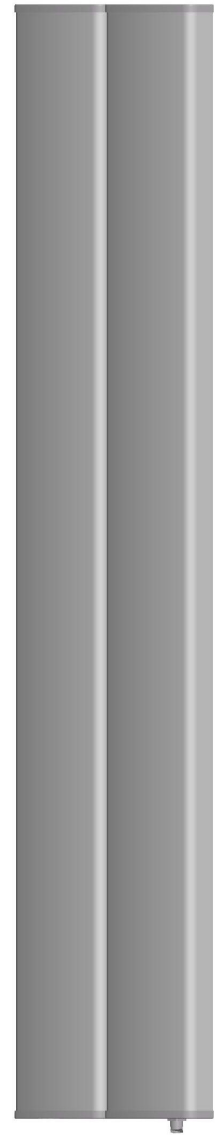


Single -band Panel	870~960
Vertical Polarization	V
Half-power Beam Width	33°
Fixed Electrical Downtilt	0°

VPol 870~960MHz 33° 20dBi 0° Tilt

Electrical specifications	KBT30VP20-09AT0
Frequency range (MHz)	870~960
Polarization	Vertical
Gain (dBi)	20
Electrical Downtilt (°)	0
Half-power beam width (°)	Horizontal:33 Vertical:7.5
Sidelobe suppression for first sidelobe above main beam (dB)	≥15
Front-to-back ratio (dB)	≥27
Impedance (Ω)	50
VSWR	≤1.4
Intermodulation IM3 (2×43dBm carrier)	≤-150dBc
Maximum power (W)	500
Lighting protection	DC Ground

Mechanical specifications	
Connector	7/16DIN Female
Connector position	Bottom
Height/width/depth (mm)	2530×570×85
Packing size (mm)	2730×620×160
Weight (kg)	42
Radome material	UPVC
Radome color	Gray
Mechanical tilt (°)	0~10
Operating temperature (°C)	-40~60
Rated wind velocity (m/s)	60
Suitable pole diameter (mm)	50~115
Mounting kit	JM-900BZ3



870~960
V

7/16

870~960MHz: VPol

