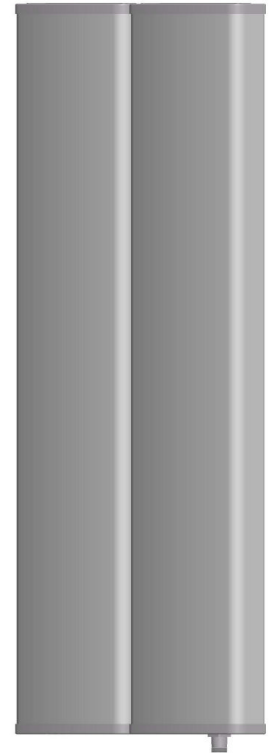




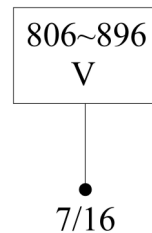
<b>Single-band Panel</b>	<b>806~896</b>
<b>Vertical Polarization</b>	<b>V</b>
<b>Half-power Beam Width</b>	<b>33°</b>
<b>Fixed Electrical Downtilt</b>	<b>0°</b>

**VPol 806~896MHz 33° 18dBi 0° Tilt**

<b>Electrical specifications</b>	<b>KBT30VP18-08AT0</b>
Frequency range (MHz)	806~896
Polarization	Vertical
Gain (dBi)	18
Electrical Downtilt (°)	0
Half-power beam width (°)	Horizontal:33 Vertical:14
Sidelobe suppression for first sidelobe above main beam (dB)	≥15
Front-to-back ratio (dB)	≥27
Impedance (Ω)	50
VSWR	≤1.4
Intermodulation IM3 (2×43dBm carrier)	≤-150dBc
Maximum power (W)	500
Lighting protection	DC Ground



<b>Mechanical specifications</b>	
Connector	7/16DIN Female
Connector position	Bottom
Height/width/depth (mm)	1270×570×85
Packing size (mm)	1600×620×160
Weight (kg)	21.5
Radome material	UPVC
Radome color	Gray
Mechanical tilt (°)	0~15
Operating temperature (°C)	-40~60
Rated wind velocity (m/s)	60
Suitable pole diameter (mm)	50~115
Mounting kit	JM-900BZ2



**806~896MHz: VPol**

