

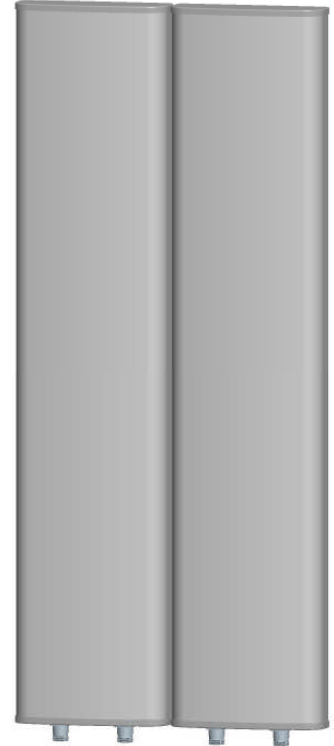


**KENBOTONG COMMUNICATION LTD.**

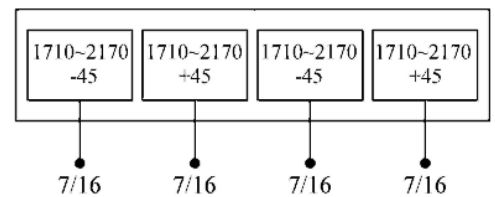
<b>2X Multi-band Panel</b>	<b>1710~2170</b>	<b>1710~2170</b>
<b>Dual Polarization</b>	<b>X</b>	<b>X</b>
<b>Half-power Beam Width</b>	<b>33°</b>	<b>33°</b>
<b>Variable Electrical Downtilt</b>	<b>0°-10°</b>	<b>0°-10°</b>

**XXPol 1710~2170MHz 33° 20.5dBi 0° -10° Tilt**

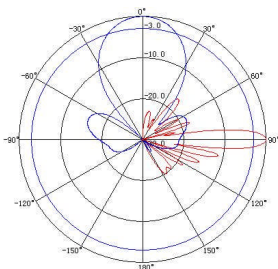
Electrical specifications	KBT30DP2121-1820AE		
Frequency range (MHz)	1710~1880	1850~1990	1920~2170
Polarization	±45°		
Gain (dBi)	4×20	4×20.3	4×20.5
Electrical Downtilt (°)	0~10		
Half-power beam width (°)	Horizontal:36 Vertical:7.5	Horizontal:33 Vertical:7	Horizontal:30 Vertical:6.5
Sidelobe suppression for first sidelobe above main beam (dB)	0°...5°...10° 16...16...15		
Front-to-back ratio (dB)	≥27		
Cross-polar discrimination (dB)	≥15(±30°≥10)		
Isolation (dB)	≥30		
Impedance (Ω)	50		
VSWR	≤1.5		
Intermodulation IM3 (2×43dBm carrier)	≤-150dBc		
Maximum power (W)	300		
Lighting protection	DC Ground		



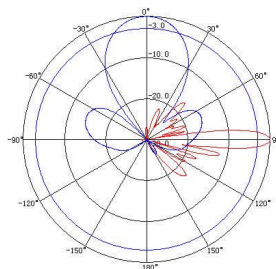
Mechanical specifications	
Connector	4×7/16DIN Female
Connector position	Bottom
Height/width/depth (mm)	1320×570×85
Packing size (mm)	1600×700×230
Weight (kg)	27
Radome material	UPVC
Radome color	Gray
Mechanical tilt (°)	0~15
Operating temperature (°C)	-40~60
Rated wind velocity (m/s)	60
Suitable pole diameter (mm)	50~115
Mounting kit	JM-900BZ2
Electrical downtilt adjustment	Manual or by optional RCU



**1710~1880MHz: ±45° Pol.**



**1850~1990MHz: ±45° Pol.**



**1920~2170MHz: ±45° Pol.**

