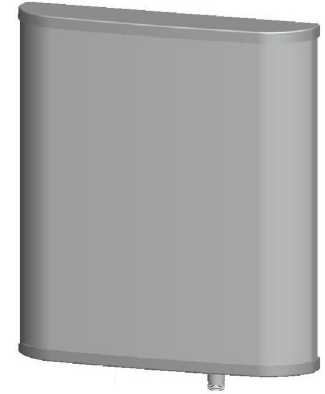


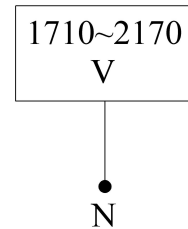


**VPol 1710~2170MHz 20° 18dBi 0° Tilt**

<b>Electrical specifications</b>	<b>KBT20VP18-1820RT0</b>
Frequency range (MHz)	1710~2170
Polarization	Vertical
Gain (dBi)	18
Electrical Downtilt (°)	0
Half-power beam width (°)	Horizontal:17 Vertical:17
Front-to-back ratio (dB)	≥30
Impedance (Ω)	50
VSWR	≤1.5
Intermodulation IM3 (2×43dBm carrier)	≤-150dBc
Maximum power (W)	200



<b>Mechanical specifications</b>	
Connector	N Female
Connector position	Bottom
Height/width/depth (mm)	520×515×100
Packing size (mm)	650×610×220
Weight (kg)	6
Radome material	UPVC
Radome color	Gray
Mechanical tilt (°)	0~10
Operating temperature (°C)	-40~60
Rated wind velocity (m/s)	60
Suitable pole diameter (mm)	35~75
Mounting kit	JM-VA



**1710~2170MHz: VPol.**

