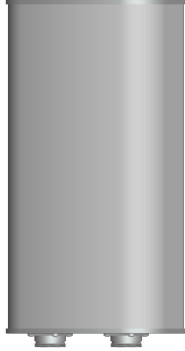


TDJ-X1727D14

Dual Polarization Panel Antenna

Technical Sheet



Applications

- LTE Band
- Point to point or point to multipoint application

Features

- Broadband, Middle Gain
- $\pm 45^\circ$ polarization
- Supplied with pole mounting kits

Specifications

Model	TDJ-X1727D14
Freq.Range-MHz	1710-2690
Gain-dBi	14
Hor.Beamwidth-°	65±6
Ver.Beamwidth-°	15
VSWR	≤1.5
Isolation-dB	≥20
F/B Radio-dB	≥23
Impedance-Ω	50
Polarization	$\pm 45^\circ$
Max Power-W	100
Connector	2×N Female
Dimension-mm	525×175×65
Pole Diameter-mm	Φ50~85
Weight-kg (without bracket)	1.5

Installation Sketch

