

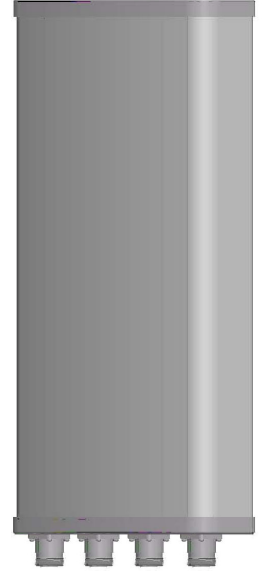


Kenbotong Technology Co., Ltd.

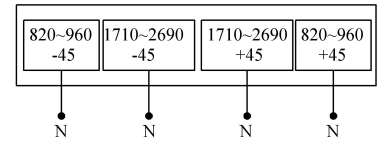
Muti-band Panel	820~960	1710-2690
Dual Polarization	X	X
Half-power Beam Width	50°	50°
Fixed Electrical Downtilt	0°	0°

XPo1 820~960MHz/1710~2690MHz 50° 9/9dBi 0° Tilt

Electrical specifications	KBT50DP0909-0827BT0			
Frequency range (MHz)	820~960	1710~2200	2200~2500	2500~2690
Polarization	±45°			
Gain (dBi)	2×9	2×9	2×9.5	2×9.5
Electrical Downtilt (°)	0			
Half-power beam width (°)	Horizontal:50 Vertical:55	Horizontal:48 Vertical:58	Horizontal:42 Vertical:55	Horizontal:37 Vertical:50
Sidelobe suppression for first sidelobe above main beam (dB)	≥18	≥18	≥17	≥15
Front-to-back ratio (dB)	≥25		≥25	
Isolation (dB)	≥28		≥25	
Impedance (Ω)	50			
VSWR	≤1.5			
Maximum power (W)	400	200		
Lighting protection	DC Ground			



Mechanical specifications	
Connector	4×N Female
Connector position	Bottom
Height/width/depth (mm)	750×300×146
Packing size (mm)	850×500×220
Weight (kg)	7.5
Radome material	UPVC
Radome color	Gray
Mechanical tilt (°)	0~10
Operating temperature (°C)	-40~60
Rated wind velocity (m/s)	60
Suitable pole diameter (mm)	50~115
Mounting kit	JM-900RZ



820~960MHz: ±45° Pol. 1710~2200MHz: ±45° Pol. 2200~2500MHz: ±45° Pol. 2500~2690MHz: ±45° Pol.

