

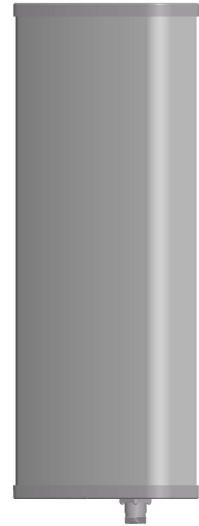


**KENBOTONG COMMUNICATION LTD.**

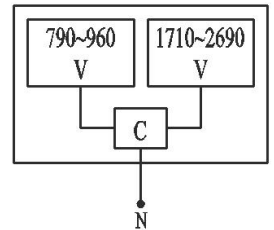
<b>Multi-band Panel</b>	<b>790~960</b>	<b>1710~2690</b>
<b>Vertical Polarization</b>	<b>V</b>	<b>V</b>
<b>Half-power Beam Width</b>	<b>65°</b>	<b>65°</b>
<b>Fixed Electrical Downtilt</b>	<b>0°</b>	<b>0°</b>

VPol 790~960/1710~2690MHz IC 65° 9/12dBi 0° /0° Tilt

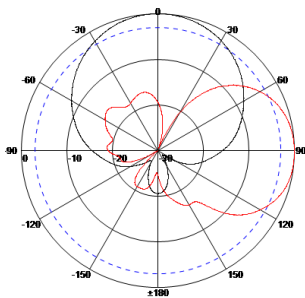
Electrical specifications	KBT65VP0912-0827RT0-C		
Frequency range (MHz)	790~960	1710~2200	2200~2690
Polarization	Vertical		
Gain (dBi)	9	11.5	11.5
Electrical Downtilt (°)	0		
Half-power beam width (°)	Horizontal:65 Vertical:52	Horizontal:68 Vertical:33	Horizontal:63 Vertical:28
Sidelobe suppression for first sidelobe above main beam (dB)	N/A		
Front-to-back ratio (dB)	≥20	≥23	
Impedance (Ω)	50		
VSWR	≤1.5		
Maximum power (W)	400	200	
Lighting protection	DC Ground		



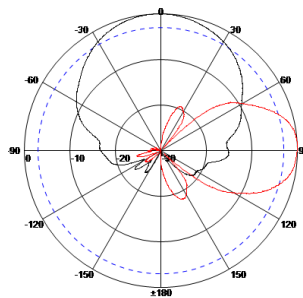
Mechanical specifications	
Connector	N Female
Connector position	Bottom
Height/width/depth (mm)	580×280×85
Packing size (mm)	730×360×180
Weight (kg)	5.5
Radome material	UPVC
Radome color	Gray
Mechanical tilt (°)	0~10
Operating temperature (°C)	-40~60
Rated wind velocity (m/s)	60
Suitable pole diameter (mm)	50~75
Mounting kit	JM-VA



**790~960MHz: V Pol.**



**1710~2200MHz: V Pol.**



**2200~2690MHz: V Pol.**

