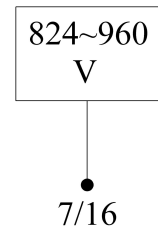
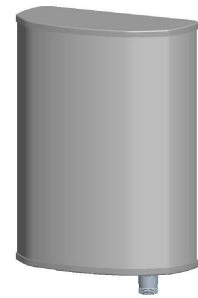




<b>Wide-band Panel</b>	<b>824~960</b>
<b>Vertical Polarization</b>	<b>V</b>
<b>Half-power Beam Width</b>	<b>90°</b>
<b>Fixed Electrical Downtilt</b>	<b>0°</b>

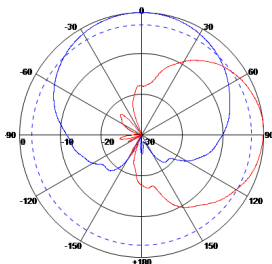
**VPol 824~960MHz 90° 8dBi 0° Tilt**

<b>Electrical specifications</b>	<b>KBT90VP08-0809BT0</b>	
Frequency range (MHz)	824~896	870~960
Polarization	Vertical	
Gain (dBi)	7.5	8
Electrical Downtilt (°)	0	
Half-power beam width (°)	Horizontal:90 Vertical:65	Horizontal:88 Vertical:65
Sidelobe suppression for first sidelobe above main beam (dB)	N/A	
Front-to-back ratio (dB)	≥20	
Impedance (Ω)	50	
VSWR	≤1.5	
Intermodulation IM3 (2×43dBm carrier)	≤-150dBc	
Maximum power (W)	500	
Lighting protection	DC Ground	



<b>Mechanical specifications</b>	
Connector	7/16DIN Female
Connector position	Bottom
Height/width/depth (mm)	290×270×137
Packing size (mm)	390×360×280
Weight (kg)	2.5
Radome material	UPVC
Radome color	Gray
Mechanical tilt (°)	0~15
Operating temperature (°C)	-40~60
Rated wind velocity (m/s)	60
Suitable pole diameter (mm)	35~75
Mounting kit	JM-VB1

**824~896MHz: VPol**



**870~960MHz: VPol**

