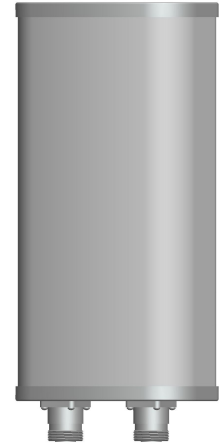




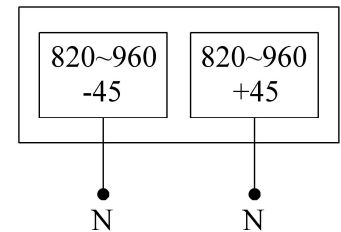
Wide-band Panel	820~960
Dual Polarization	X
Half-power Beam Width	65°
Fixed Electrical Downtilt	0°

XPo1 820~960MHz 65° 9dBi 0° Tilt

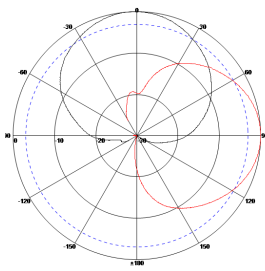
Electrical specifications	KBT65DP09-0809RT0	
Frequency range (MHz)	820~896	870~960
Polarization	±45°	
Gain (dBi)	2×9	
Electrical Downtilt (°)	0	
Half-power beam width (°)	Horizontal:68 Vertical:60	Horizontal:65 Vertical:58
Sidelobe suppression for first sidelobe above main beam (dB)	N/A	
Front-to-back ratio (dB)	≥25	
Cross-polar discrimination (dB)	≥15(±60°≥10)	
Isolation (dB)	≥28	
Impedance (Ω)	50	
VSWR	≤1.5	
Intermodulation IM3 (2×43dBm carrier)	≤-150dBc	
Maximum power (W)	500	



Mechanical specifications	
Connector	2×N Female
Connector position	Bottom
Height/width/depth (mm)	350×280×85
Packing size (mm)	460×390×210
Weight (kg)	4
Radome material	UPVC
Radome color	Gray
Mechanical tilt (°)	0~15
Operating temperature (°C)	-40~60
Rated wind velocity (m/s)	60
Suitable pole diameter (mm)	50~75
Mounting kit	JM-1800RZ1



820~896MHz: ±45° Polarization



870~960MHz: ±45° Polarization

