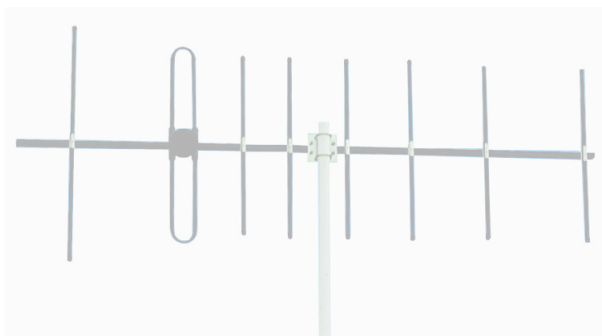


# TDJ-150CG

## Directional Yagi Antenna

### Technical Sheet



Note: This picture is only for reference.

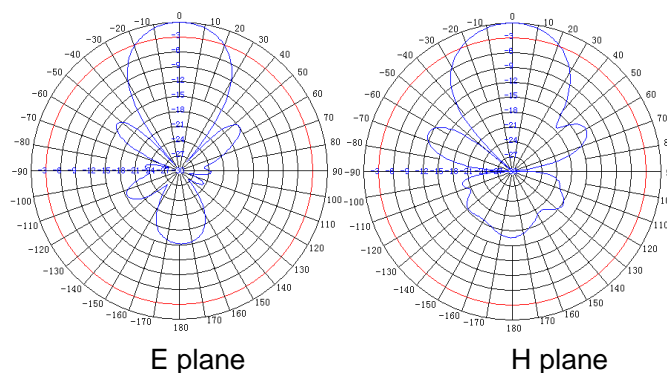
#### Applications

- Long distance communication system
- Remote detect system

#### Features

- Low VSWR, board band
- Light weight
- Long-distance communication, strong anti-jamming ability
- High quality Aluminum alloy
- Extent a low loss cable

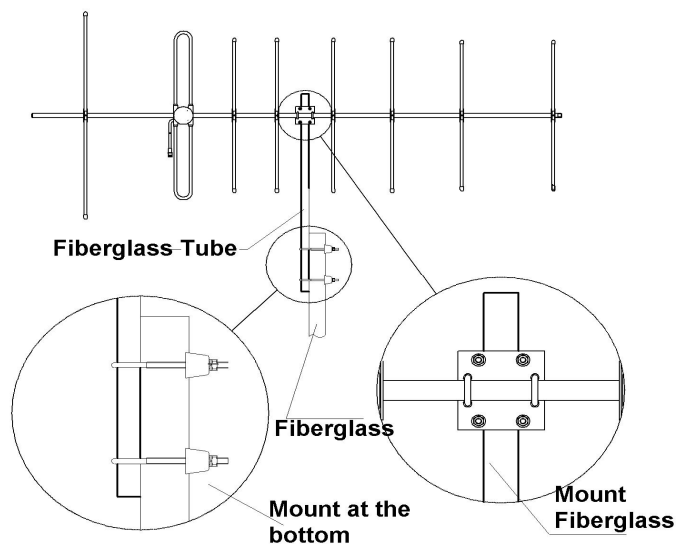
#### Reference Pattern



#### Specifications

Model	TDJ-150CG
Freq.Range-MHz	134~173
Gain-dBi	11.2
Hor.Beamwidth-°	44
Ver.Beamwidth-°	40
F/B Ratio-dB	≥16
VSWR	≤1.5
Impedance-Ω	50
Polarization	Liner(Vertical or Horizontal)
Max.Power-W	100
Connector	N female or customized
Length-m	2.2 (may vary with frequency)
Weight-Kg	3.2 (may vary with frequency)
Mast Diameter-mm	40-50

#### Installation Sketch



1. Mount the fiberglass in the middle with assistant clamp as per, please keep the body in balance;
2. Fasten the fiberglass tube on the support pole, aiming at the direction of communication;
3. Adjust the azimuth angle of antenna to maximum the signal;
4. Fasten all the screws, do waterproof well for the connectors.



Kenbotong Communication LTD

Addr :NO.2 Chanxiu Road ,Foshan city,Guangdong China Code:528061  
 Tel: 86(757)8202-5597, 8221-9788 Fax : 86(757)8221-2072,8802-2808  
 Email: kbt@kenbotong.com web: <http://www.kenbotong.com>